



Hillside Crescent, , SS9

BUTLER  STAG



## Large Double Room in newly refurbished property, in close proximity to Chalkwell Station and Leigh Broadway.

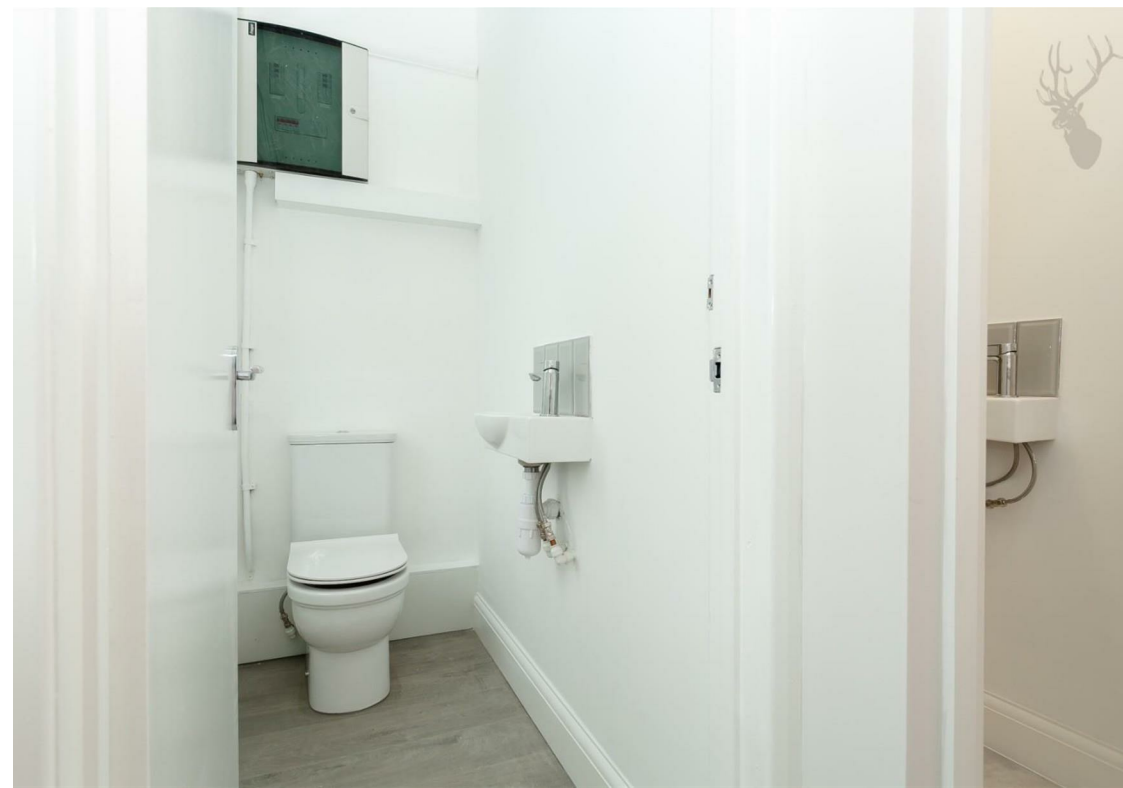


Newly refurbished large double room with private kitchenette and ample bathroom amenities, including three showers rooms, bathroom, and separate toilets. The property is located on a smart residential turning, which is in close proximity to both Leigh Broadway and Chalkwell Rail station.

There is the added benefit of a shared garden and laundry room.

Single occupancy only, no smoking.



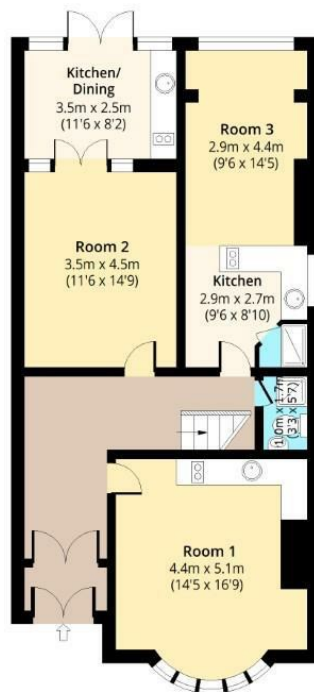


## Hillside Crescent, SS9 1ER



### Ground Floor

Approx. 89.09 Sq. meters (959 Sq. feet)



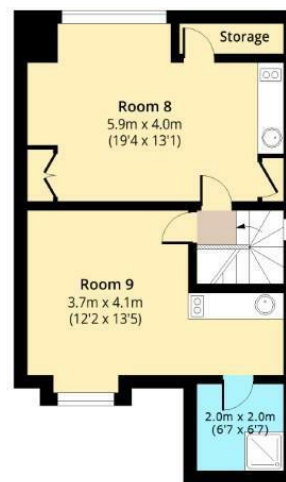
### First Floor

Approx. 75.25 Sq. meters (810 Sq. feet)



### Second Floor

Approx. 52.12 Sq. meters (561 Sq. feet)



Total area: approx. 216.46 Sq. meters (2330 Sq. feet) (Excluding Balcony)  
Total area: approx. 221.86 Sq. meters (2388 Sq. feet) (Including Balcony)  
For illustration purposes only - not to scale  
[www.lpaplus.com](http://www.lpaplus.com)

# BUTLER & STAG

☎ 020 8102 1236

🏠 508 Roman Road, Bow, London, E3 5LU

✉ [bow@butlerandstag.com](mailto:bow@butlerandstag.com)

[www.butlerandstag.uk](http://www.butlerandstag.uk)

**IMPORTANT NOTICE** - These particulars have been prepared in good faith and they are not intended to constitute part of an offer or contract. We have not performed a structural survey on this property and the services, appliances and specific fittings have not been tested. All photographs, measurements, floor plans and distances referred to are given as a guide and should not be relied upon.